



# Mack Messenger

NEWS FOR McDONELL CENTRAL CATHOLIC HIGH SCHOOL  
ALUMNI, FACULTY, STAFF, FAMILIES AND FRIENDS

photo by: Cindy Yohnk

Nolan Geissler, McDonell Area Catholic Schools Kindergartener, expresses his joy in being able to shake Bishop William Callahan's hand. The Chippewa Falls Deanery Catholic Schools came together at McDonell High School during National Catholic Schools Week. *Story on page 2*



*Education for Life*

## Winter/Spring 2016 Issue 2014-15 Annual Report Edition

The McDonell Area Catholic Schools are committed to the formation of community, academic excellence and the spiritual and physical well-being of each student in the Spirit of Jesus Christ.



*Education for Life*

The McDonnell Area Catholic Schools are committed to the formation of community, academic excellence and the spiritual and physical well-being of each student in the Spirit of Jesus Christ.



System Accrediation since 2011

## SHARE YOUR NEWS

Update your contact information at:  
[www.McDonnellAreaCatholicSchools.org/alumni](http://www.McDonnellAreaCatholicSchools.org/alumni)

Email: [MackMessenger@macs.k12.wi.us](mailto:MackMessenger@macs.k12.wi.us)

## JOIN YOUR CLASSMATES - STAY CONNECTED



Like us McDonnell Central High School Alumni and McDonnell Area Catholic Schools



[McDonnell\\_HS](#) Follow your Alma Mater on Twitter

Text **MCDONELL** to 22828 to stay connected!

The Mack Messenger is published twice a year by the McDonnell Area Catholic Schools (MACS). Comments should be directed to:  
MACS Advancement Office  
1316 Bel Air Boulevard  
Chippewa Falls, WI 54729  
TEL: 715.723.0538 x3306  
[MackMessenger@macs.k12.wi.us](mailto:MackMessenger@macs.k12.wi.us)

Very Rev. Msgr. Mark Pierce,  
Dean of Chippewa Falls Deanery  
Jeffrey Heinzen, President  
Jenny Schafer,  
Director of Advancement  
Cathy Greenseth, Graphic Designer |  
Director of Communications

# Table of Contents

- |   |  |
|---|--|
| <b>1 Message from Dean</b><br>Very Rev. Msrg. Mark Pierce               | <b>7 Thank you from Class of 2016</b><br>Rachel Kopp, Senior                             |
| <b>3 Message from President</b><br>Jeffrey Heinzen                      | <b>8 Leaving-A-Legacy</b>  |
| <b>4 Message from the Education Commission Chair</b><br>Scott Sokup '88 | <b>9 Message from Director of Advancement</b> Jenny Schafer                              |
| <b>5 Alumnus brings hotel to downtown Chippewa Falls</b>                | <b>10-14 MACS Giving Fund 14-15</b>  |
| <b>6 National Merit Finalist</b><br>Samuel Huffcutt, Senior             | <b>15 Financials</b>   |
| <b>Message from Lead Team</b><br>McDonell High                          | <b>16 Student Achievement</b><br>Scrip Gift Card Tuition Credits                         |
|   | <b>17-20 Alumni Class Notes</b><br>Shout outs, marriages, births, memorials and memories |



### McDonell Central Alumnus to be Ordained to the Priesthood

Rev. Joseph (Joe) Baker '06  
Ordination to the Priesthood  
Friday, June 24, 2016  
in the Madison Diocese.

### Mass of Thanksgiving

St. Charles Borromeo Parish in Chippewa Falls  
Sunday, June 26 at 10:30 AM  
All are invited to attend.  
Look to our Summer-Fall 2016 issue for story.

Left: Joe Baker being ordained a Deacon by Cardinal Dolan, Archbishop of New York on Oct. 1, 2015 at St. Peter's Basilica in Rome.

McDonell Area Catholic Schools believe that all the information within this publication is true and accurate to the best of our knowledge. Please contact us for any inaccuracies.

## Parishes

### St. Charles Borromeo

Rev. Edward Shuttleworth  
Rev. Charlie Richmond, Associate Pastor  
Deacon Thomas Kinnick '80



### Church of the Holy Ghost

Rev. Justin Kizewski



### The Church of Notre Dame

Very Rev. Msgr. Mark Pierce, Dean

Thank you to the area Priests and Parishioners for your support of Catholic education.

## Other Chippewa Falls Deanery Supporting Parishes

### Holy Cross *Cornell*

Rev. Eric Linzmaier, Deacon Dennis Rivers

### Sacred Heart of Jesus *Jim Falls*

### St. Anthony *Drywood*

Rev. Eric Linzmaier

### St. Paul *Bloomer*

Rev. John Potaczek '88, Deacon Dick Kostner

### St. Bridget *Springfield*

Rev. Justin Kizewski

### St. John the Baptist *Cooks Valley*

Rev. John Potaczek '88

### St. Peter the Apostle *Tilden*

Rev. Edward Shuttleworth, Deacon Dan Rider  
Associate Pastor Rev. Charlie Richmond

### All Saints Catholic Parish *Boyd, Cadott, Stanley*

Rev. William Felix '73, Deacon Ned Willkom





Very Rev. Msgr. Mark Pierce

# Investment from the Dean Very Rev. Msgr. Mark Pierce



To the families, alumni, benefactors, and friends of the McDonell Catholic Schools—

Right after Christmas I received a call from my financial planner. [Yes, clergy, like everyone else who can manage it, need to plan for the possibility of retiring.] He was “checking in” to see how the decisions we had made some months back were panning out. Not all of our plans had shown an immediate payback, but he reassured me that, at this

point, the investments we had made remained sound and that we should stay the course.

That made me think about the larger investments we make, not for our retirement, but in people. I suspect there are times when we wonder if we made the right decisions. It’s likely all too rare that a student, a mentee, or an athlete checks back to let the teacher, mentor, or coach know how their investment in time and energy is bearing fruit. And that, in turn, got me thinking about the tremendous contributions you are making, or have made, in behalf of your children and grandchildren (and other peoples’ children).

The last figure I was able to chase down from the

“ I believe there has never been a time when raising our daughters and sons as people of faith mattered more.”  
Msgr. Mark Pierce

Department of Agriculture’s “Cost of Raising a Child Report” proposed that the “average cost” of raising a child born in 2013 up until age 18 in the U.S. is approximately \$245,340 (or \$304,480, adjusted for projected inflation). And that doesn’t even begin to calculate the human commitment: diaper changes, midnight feedings, meal preparation, constant cleaning, worrying, teaching them their letters and manners, and on and on and on. Yikes.

But if that sounds like an argument for second guessing our decisions about welcoming children, you misunderstand me. There is no finer, grander, more priceless thing to be involved in than building a soul. In an interview just before her death, Jacqueline Kennedy Onassis remarked: “If you bungle raising your children, I don’t think whatever else you do will matter very much.” That may sound harsh at first, but I think she had it just right.

Whether you are a parent or grand-parent of a current McDonell Area Catholic Schools’ student, an alumni, a current or past teacher or staff person, the pastor of a supporting MACS parish, or a community friend or benefactor, I thank you for your investments of time, energy, and money to our Catholic Schools. I believe there has never been a time when raising our daughters and sons as people of faith mattered more.

I welcome you to the McDonell Catholic Schools Annual Report.

In Christ,

Very Rev. Msgr. Mark Pierce

## Excellence in Education Banquet Correction

On Wednesday, May 6, 2015 the 30th Annual Excellence in Education Banquet was held at Avalon. Emily Stoffel was unintentionally not featured in the Mack Messenger Summer 2015 issue. The McDonell top five academic students were honored with a meal and program along with their most influential teacher by area businesses, school administrators and the hosts for the night, the Chippewa Falls Chamber of Commerce. Please see the corrected version of the Mack Messenger on our alumni website page featuring all the seniors honored. *Congratulations to Emily for your academic achievement and Mrs. Tammy ‘77 Postl Christopher for influencing her in her success!*



Emily Stoffel with her parents Mike ‘86 and Lisa Stoffel along with her most influential teacher (right) Mrs. Tammy ‘77 Postl Christopher.



Bishop Callahan answers random questions students wanted to know about him.



# Mass with the Bishop ....

The Chippewa Falls Deanery was very blessed this year to have the Diocese of La Crosse Bishop William P. Callahan celebrate with us during National Catholic Schools Week on Thursday, February 4, 2016 at McDonell Central Catholic High School.

With almost 700 students, teachers, support staff and clergy from the Chippewa Falls Deanery, we had a lovely time celebrating Mass together, learning about the Bishop in a question and answer session, and having fun with a joust!

Thank you to the McDonell Chaplain Rev. Charlie Richmond and school principals who organized the event, Deacon Dan Rider and his food service crew for preparing the meal for all the attendees.



The Bishop has a good laugh as he greets the students before Mass.



Rev. Justin Kizewski gives the students a high five while they wait in line for lunch.



Staff enjoy the jousting competition as do the students.



Rev. John Potaczek '88 blesses the younger students as they come forward during communion.



The Chippewa Falls Deanery Catholic Schools fill the McDonell gymnasium.



# Looking Forward

from the President  
Jeffrey Heinzen

Annual reports are not only about thanking all our wonderful supporters of the school system but also about sharing the road map of where we are going. In 2015-16, we expanded our Project Lead the Way (PLTW) program, increasing our collaboration with business and the higher education institutions serving our Chippewa Falls region.

We will be seeking a system reaccreditation through AdvancED this Spring. This process engages stakeholders and staff to challenge ourselves to best practices, to document the value, and to demonstrate the Return On Investment (ROI) that our families expect from their commitment to MACS.

The reaccreditation, in turn, will kick off the strategic process improving our next five year plan.

We will also welcome new faces in leadership roles; Brian Schulner as the Notre Dame Middle School-McDonell Central Catholic High School Principal and Ruthann Proue, School Counselor for the 2016-2017 school year.

Mr. Schulner comes to us after 16 years as a High School Principal at the Fall Creek School District. He is very familiar with Catholic education being a product of the Regis Catholic School System himself.

Mrs. Proue is also well experienced as a professional school counselor for 16 years in the middle and high school level from the Cadott School District. We look forward to them coming soon to our school system.

A very special THANK YOU to the Lead Team who has been diligent in keeping the ship steady at both schools. As you can see, we have much to be thankful for and the plans for updating our Strategic Plan to continue to be sustainable into the next century.



Jeffrey Heinzen, President

THANK YOU to all who engage with us in pursuing the MACS Mission: our teachers starting at the Early Childhood Center, to our elementary, middle, and high school; our support staff, principals, executive committee, education commission and various organizations and committees. We are thankful for your dedication to the commitment to the formation of community, academic excellence and the spiritual and physical well-being of each student in the Spirit of Jesus Christ.

None of those mentioned above would be able to work toward the MACS Mission without the financial support of so many stakeholders.

Therefore, my greatest THANK YOU

goes to all of you who have given your time, your talent and your financial support. The families who support the Chippewa Falls Deanery Parishes, who in turn underwrite the Catholic education of over 450 students, our families who see the value in a MACS Diploma and make the tuition commitment, our community stakeholders and alumni who gift us each year so that we provide scholarships to 40% of those attending MACS. *Thank you all!*

We look forward to sharing and celebrating the legacy and to strategically positioning ourselves for the next 100 years.

May God continue to bless you and our MACS family abundantly,

A handwritten signature in black ink that reads "Jeffrey B. Heinzen". The signature is written in a cursive, flowing style.

## Junior Achievement Business Challenge students place third

On March 8, 2016, two teams from McDonell Central Catholic High School participated in the annual Junior Achievement Business Challenge 2016 at the Chippewa Valley Technical College in Eau Claire. The team consisting of Jacob Lindsley, Bryan Misener, and David Van Dyke placed third in the championship round of the challenge, winning post-secondary scholarships of \$200 each. The Business Challenge is an

event where more than 100 high school students from 16 school districts across northwestern Wisconsin send teams to compete within a business simulation program, which requires them to make hard business decisions and analyze economical trends.

Thank you to the teams sponsor JAMF Software, and mentor Tom Huffcutt '81 from Chippewa Valley Technical College. *Congratulations!*



Left to right: Jacob Lindsley, David Van Dyke, and Bryan Misener

# PURPOSE

## from the MACS Education Commission Chair

Greetings from the MACS Education Commission. First I would like to say thank you to our parents, alumni and parish members who support MACS; we are truly blessed in Chippewa Falls to have a top-notch Catholic School system, and we have you to thank for its success. The commission has some new members this year, and I want to thank them for stepping forward and helping lead our school system. We welcome, Mike Crawford '88, Janet Roth, Mark Baker and Tracy Fischer.

One of the questions I've been asked over the past couple of years by parents is, "What is the purpose and role of the Education Commission?" In a nutshell, the Education Commission's primary role is to advise the Dean, who is a Priest appointed by the Bishop to serve the Chippewa Falls Deanery, MACS President and the governance of the school system. The commission plays a key role in making sure we have the right leadership, policies and educational programs in place to meet our mission and vision as a unified school system. Members are all stakeholders, with each member being appointed by their parish to represent the interests of



Scott Sokup '88 Chairperson

the parish. Each member works to ensure the system's leadership is meeting the educational planning, goal setting and policy formulation outlined by the La Crosse Diocese. Members of the commission also work with our MACS clubs, councils and teams to help them define their goals, and ensure these goals line up with the mission and vision of MACS. Members are involved in our 2016 accreditation process, as well as school improvement teams,

“The members of the Education Commission are your representatives. . .”

facility teams, and tuition committees.

Anyone may request the opportunity to attend one of our meetings and address the commission. We welcome your involvement and opinions. We would like to encourage parents, alumni and parish members to get involved in the school system, and bring us your ideas. As an alumnus and a parent with three children in the system, I understand we ask a lot of our parents, alumni and parish members. We appreciate all of your time, talent and treasure you donate to the schools. The members of the Education Commission are your representatives, let us know what MACS is doing right, where we need to improve, and share your ideas with us.

*Thank you for all you do to support MACS, and may God bless you.*

Scott Sokup '88  
MACS Education Commission Chair

## COMMISSION MEMBERS

**Scott Sokup '88**

Chairperson and Representative,  
Church of the Holy Ghost

**Michelle Farrow**

Vice-Chairperson and Representative,  
The Church of Notre Dame

**Lynn Lembezeder Newton '88**

Representative, Church of the Holy Ghost

**Mark Baker**

Representative, St. Charles Borromeo

**Mike Crawford '88**

Representative, The Church of Notre Dame

**Tracy Fischer**

Representative, Church of the Holy Ghost

**Missy Beaudette Grill '00**

Representative, St. Peter the Apostle

**Janet Roth**

Representative, The Church of Notre Dame

Become a representative  
of the MACS Education  
Commission board



If you would like to become a  
MACS Education Commission representative from your  
supporting parish community, please contact your parish.



## Grounding our Educational Leadership with Cohort 2

By Mary Huffcutt, MACS Dean of Academic Affairs and Accreditation

On April 20th at 4:00 PM, parents, students, teachers, stakeholders, and family members will be gathering in the McDonell auditorium to listen to our second cohort of teachers that are in the Education Leadership Community – Master’s program present their work.

**Three teachers from MACS, prek through grade 12, Jaynee Armstrong ‘03 Brannen, Eric Wedemeyer ‘92, and Mitch Jacobson ‘07 will present their professional learning journey that they participated in for the last three years.** In May, they will receive their Masters in Education from Saint Mary’s University of Minnesota.

This is a unique partnership with St. Mary’s University, offering curriculum driven by the needs of MACS and the teachers collaborating on best practices.

Through the generous support of local businesses, alumni, and parents, teachers are able to get a Masters in Education from Saint Mary’s University of Minnesota. The teachers pay a commitment fee of \$175 and sign a contract to stay with MACS for five years. The first three years they participate in graduate coursework as a team at McDonell High School.

The second two years of the five-year contract, the teachers work together to provide coaching and mentoring of teachers throughout the system at MACS.

**Please, come join us on Wednesday, April 20, 2016 at 4:00 PM to celebrate this collaboration of teachers in their commitment to strengthen and improve our schools.**



Alumni gather at the groundbreaking of the Cobblestone Hotel and Suites in support of fellow alumni Kim Emerson ‘88 and Brian Wogernese ‘88. Pictured left to right: Marc Maniquiz ‘88 , Gregory Schindler ‘87, Kim Emerson Wogernese, Steve Roesler (‘14 Honorary), Brian Wogernese, Scott Emerson ‘68, Mike Crawford ‘88, Rolly Enderes ‘96 (President of Alumni Association), and John Monarski ‘67.

## Alumnus brings hotel business to downtown Chippewa Falls

Cobblestone Hotels, based out of Neenah, purchased the former Plaza building lot on the corner of 100 N. Bridge and Spring Street, along with the vacant lot just west of the new SEH building on Spring Street.

The hotel chain cofounded by McDonell Alumnus Brian Wogernese ‘88, plans a four-story, \$6 million, 45-room hotel on the site of the former Plaza building, which was demolished in March 2015. The hotel will also feature a 50-seat restaurant called the Wissota Chophouse. Cobblestone Hotel & Suites are looking to open for business in August of 2016.

Before the groundbreaking ceremony on January 4, 2016, Brian Wogernese had asked his former teacher from McDonell High School Mr. Steve Roesler if he would attend. During the press conference Mr. Roesler had the opportunity to speak on his remembrance of a conversation he had with Brian’s mother who was concerned for her son graduating. Mr. Roesler had reassured her and commented to her he thought, “Brian would go far, based on his character”. He then congratulated Brian on his success.

Mr. Roesler was later surprised when Brian addressed the crowd saying, “Usually we (Cobblestone Hotel & Suites) will present a shovel to the new owner of the Hotel during the ground-breaking.” He continued, “Due to the fact that we own this hotel, I would like to present this shovel to Steve Roesler.” Brian went on to speak highly of McDonell Central Catholic High School and the education he received.

### Looking Forward Celebrating our Gifts

Wednesday, April 27  
McDonell High School  
5:30 PM Social  
6:00 PM Presentation

MACS current and new families, along with community members are welcome to attend this celebration of who we are and our gifts of students, alumni, parents, and volunteers.

Steve Roesler and Brian Wogernese



# AGENTS OF MERCY

from the **Notre Dame-McDonell Lead Team**

Dear Parents, Alumni, and Friends,

This year we are inspired by Pope Francis and his proclamation of the Year of Mercy which began on December 8, 2015, the Solemnity of the Immaculate Conception, and his challenge to extend the mercy of God that we have each received to those we can and should. He is asking us to be an extension of the love of God to a hurting and hungry world exactly by being agents of mercy.

In response, we have taken on the task of trying to serve others in specific and tangible ways. Our intention is to bring to the forefront of our minds those who are in need of special attention and develop a concrete way in which we can alleviate some of their suffering. It gives us an opportunity to give praise, honor, and glory to God through the service of those in need. It becomes a way for us to live the life of a disciple of Jesus Christ and do so by living at the very intersection of the Cross—namely the vertical dimension of



## Senior Samuel Huffcutt National Merit Finalist

McDonell Central Catholic High School Senior Samuel Huffcutt, son of Tom '81 and Mary Huffcutt, has been announced as a National Merit Finalist. He is one of more than 15,000 National Merit Finalists nationwide.

Previously, Samuel was awarded semifinalist status from approximately 1.5 million juniors nationwide who took the Preliminary SAT/National Merit Scholarship Qualifying Test. For

Samuel to then become a Finalist, a Semifinalist must have an outstanding academic record throughout high school, be endorsed and recommended by the high school principal, and earn SAT scores that confirm the student's earlier performance on the qualifying test.

Winners of the 2016 National Merit Scholar will be announced in nationwide news releases beginning in April and concluding in July.

All National Merit Scholar designees are selected on the basis of their skills, accomplishments, and potential for success in rigorous college studies, without regard to gender, race, ethnic origin, or religious preference.

McDonell alumni Ann Kuehl, class of 2012 and David Plendl, class of 2011 were recent National Merit Scholar winners.

praising God through the horizontal dimension of service of those less fortunate.

In September, having a jeans day for a dollar collected enough money to support a young man from Mexico who is part of the Unbound program for a year. He is in need of funds to continue his education (he is 12 years old) and hopefully will climb out of the cycle of poverty he is currently experiencing in Mexico. We collected over \$360.

In October, we had what has become an annual diaper drive for Mary. Our Ambassador Program has coordinated this for a number of years and in doing so we collect diapers (lots of them), wipes, and other items for families with young ones who do not have the means to afford these expensive items that are so needed. The amount of diapers and wipes that we sent out was tremendous as the response of our students and families never ceases to amaze us.

In November we collected enough non-perishable food items to fill a van just prior to Thanksgiving. Each homeroom or first block class placed their collected items to be blessed at our last Mass together before the Thanksgiving break. The stage was full. It was especially important for the kids to see what they can do for others in a very simple way. As one person the corporal work of mercy of feeding the hungry is a daunting task, but together we can make a huge dent in the suffering, and that was evident that day when we looked at the food on the stage.

In December we decided to adopt our diocesan orphanage, Casa Hogar, in Peru. We collected all the items that a young person would need to attend school at the orphanage. These items included: paper, notebooks, folders, pens, pencils, markers, crayons, binders, and backpacks. Again, these items filled the stage for our Community Day Mass on December 23rd and blessed during the Mass. The children of the school at Casa Hogar will have enough of the necessary items for school for a number of years.

Beginning in February and during the season of Lent we undertook two activities to support our diocesan mission in Santa Cruz, Bolivia.

Hopefully, we are being agents of mercy to a hungry and hurting world. If you would like to help us please contact the office and they will put you in touch with the right people. We extend a special thank you to all of you who help us in providing a Catholic Education to the children of the area. We also want to thank our parents for entrusting us with the task of educating your children. We consider this a sacred trust and will do our best at providing your children with a high quality program and a safe and caring environment. *May you experience the love of Christ, who is mercy incarnate.*



# THANK YOU

from the  
**2016 Senior Class**

Hello;

My name is Rachel Kopp, and I am currently a senior at McDonell Central. I have been a part of the MACS system since I was in kindergarten.

Attending MACS has had a positive impact on my life. I have been able to receive such an amazing education and grow in both my Catholic faith and education.

Through the MACS system you receive a more one - on - one education. The smaller class sizes have allowed me to focus better and to build a relationship with the other students in my classes. This factor has also given me the opportunity to ask my teachers questions and to get help when I don't understand something.



At McDonell there is a strong sense of community and family. You feel as if the people you see everyday at school are your "school family".

Aside from academics, I have been able to participate in sports and other organizations at MACS. Programs such as Student Ambassadors have allowed me to meet great people and to learn the values of service and giving back to my community. My involvement in both cross country and track has been a positive experience throughout my high school years. Participating in sports at McDonell gives you the opportunity to build new friendships and to grow as an athlete.

Thank you to all of our supporters and families of the MACS system. With your help and support many students have been able to receive an amazing Catholic education. You have helped us grow into the wonderful people we are today.

*Rachel Kopp '16*

# Leaving a Legacy



Leonard Hart

McDonell was the recipient of three very generous planned gifts from alumni and friends this past fiscal year. Their planned gifts will ensure McDonell will be able to continue offering high quality Catholic education for years to come. If you would like information on providing for McDonell in your estate plans, contact Jenny Schafer, Director of Advancement, at 715.723.0538 or j.schafer@macs.k12.wi.us.

## LEONARD G. HART

While Leonard G. Hart may not have been a McDonell alumni, his gift to the McDonell Area Catholic Schools will ensure his and his mother's memory lives on for quite some time. Leonard requested that the gift we received be used for professional development for our teachers. Leonard wanted to honor his mother Ruth E. Hart, who was a former elementary school teacher.

Leonard, who passed away in May 2015 was raised in Chippewa Falls and graduated from Chippewa Falls Senior High School in 1949. As an exceptional athlete, he earned the position of captain of the 1948 Chi-Hi football team.

Upon graduation from high school, Leonard joined the United States Army, underwent training, then served in the 37th Medical Field Unit in Korea during the Korean Conflict. During his tenure, he

was awarded the Korean Service Medal with three bronze stars, Combat Medical Badge, UN Service Medal, and National Defense Service Medal.

Following his honorable discharge from the Army in 1953, Leonard returned to Chippewa Falls. Leonard was a quiet person that enjoyed reading, experiencing the outdoors, and walking throughout the city, especially Irvine Park, who also received a generous gift from Leonard's estate. The **Ruth E. Hart Teacher Professional Development Fund** will provide the funds for our teachers to be able to further develop and hone their skills, including pursuing their Masters degree, to be the best they can be for years to come.

(Portions of this article reprinted with permission from the Community Foundation of Chippewa County).

## ELIZABETH "BETTY" GARDNER '41 PETERSON

Betty was proud to be a twin to her brother, Robert. Both were 1941 graduates of McDonell Memorial High School.

In high school, Betty was on the cheerleading squad, Mardi Gras Court and McDonell Honors Society, just to name a few. After high school, Betty met Wilbur "Pete" Peterson and they married in 1948 in Chippewa Falls. They then moved to Omaha, Nebraska where Betty was a wonderful full time homemaker. She was also very active in her church and she was quite the artist.

Betty moved back to Chippewa Falls in 2010 and enjoyed reconnecting with family and friends. Betty passed away on May 24, 2014 and in keeping with her generous spirit she donated the bulk of

her life savings to her Alma Mater. Her wish was that her gift be used to benefit all students grades K-12. To honor her wishes, with the help and guidance from her niece Julia, the McDonell Area Catholic Schools will be establishing the **Betty Gardner Peterson Scholarship** which will provide scholarships to students wanting to attend MACS and the **Peterson Curriculum Fund** which will provide funding for updating textbooks and curriculum supplies in perpetuity.

## CATHERINE MCDOWELL '50

Catherine McDowell and her sister, Mary Pat McDowell '47 were devoted to each other and to their beloved McDonell. You could not attend an elementary concert, high school musical or alumni event without seeing the sisters. Catherine passed away on May 11, 2014, leaving her estate to her sister.

Catherine was an elementary school teacher. She began her career in Wausau in 1954 and then moved back to the Chippewa Valley and taught in Eau Claire from 1957 to 1990 at the Arlington Heights Elementary School. Catherine continued to teach CCD after her retirement at her beloved parish, Notre Dame.

In typical fashion of their generous spirit, Mary Pat donated a portion of Catherine's estate back to McDonell. Through their generosity, some of the projects we were able to fund were a portion of the new Project Lead The Way library, new blinds for classrooms at McDonell and new student desks for Holy Ghost elementary.

Below: Mary Pat (left) and Catherine (right) McDowell volunteered at the annual Fall Craft Country Expo each year.



Betty Peterson





# Looking to replace 1964 desks at McDonell High.

# YOUR GIFT

from the  
**Director of  
Advancement**



Above Left: Senior Caleb Parkhurst demonstrates how uncomfortable and unforgiving are the 1964-65 desks. Above Right: Caleb now has one of the new desks with an adjustable height and a spacious tabletop along with a detached ergonomic chair.

McDonell Central Catholic High School has several classrooms that are still furnished with desks that were purchased when it was originally built in 1964-1965.

Thanks to the generosity of two of our alumni, who wanted to honor their teachers that influenced them when they were at McDonell, we were able to fully furnish three classrooms with new desks and chairs. *Would you like to honor a former teacher or one of your classmates who now is a teacher at McDonell?* (Mrs. Mary Chovan '69 King, Deacon Tom Kinnick '80, Mitch Jacobson '07, Shelly Franz '85 Retzlaff, and Renee Ruf '84 David are currently teaching at their Alma Mater).

We have three more classrooms to replace desks and chairs, plus four classrooms in the high school and middle school that need 112 new chairs. We are asking our McDonell alumni and friends to help us provide our students with the best possible learning environment to help them achieve academic excellence. *Will you help with this project?*

One Desk = \$118

One Chair = \$71

One classroom = \$4958 (26 desks and 26 chairs)

If you would like to help, you can make your donation online at [www.macs.k12.wi.us](http://www.macs.k12.wi.us) under "Support MACS" or by mailing a check (payable to MACS) to:

Attn: Jenny Schafer  
McDonell Area Catholic Schools  
1316 Bel Air Blvd  
Chippewa Falls, WI 54729

*Thank you for your support!*

On behalf of all of us with the McDonell Area Catholic Schools, I would like to thank all of you for your very generous support for the 2014-2015 fiscal year. Your generosity is a blessing to us.

Last year we kicked off a fundraising campaign to fund our new STEM (Science, Technology, Engineering & Math) curriculum in the middle and high school. This curriculum is provided in partnership with PLTW (Project Lead the Way), a national non-profit that works with engineering schools and businesses like Boeing and NASA to develop relevant curriculum. Included with this project was the remodeling of the McDonell library – it turned out beautifully! Thank you to all who supported this project. *We just need an additional \$30,000 and we will have met our fundraising goal. If you would like to help with this project, simply contact me.*

Our MACS Fund Annual Appeal is in full swing for the 2015-16 year and continues to focus on the overall budget for our schools. Our goal this year is \$300,000. As of the end of December, we have raised \$115,214. That is 38% of goal at the half way mark. **Please help us reach our goal!** Your support for our general fund keeps our school running and helps students attend MACS!

I realize many donors prefer to have a more specific use for their donation than the general fund. One key area for donations is tuition scholarships. Gifts can be made to the general scholarship fund or a named scholarship can be established. Forty percent of our families receive assistance to help with tuition. Every parent wants the best for their children. A Catholic education is a dream for some families due to their financial situation. You can help make their dreams come true.

If a gift of treasure is not an option for you at this time, I ask that you offer a daily prayer for our students, faculty and staff – for their success academically and for our continued success as a school system. The gift of prayer is the greatest gift of all.

I would like to ask all of you to prayerfully consider giving an "Education for Life" by supporting MACS. We continue to make a difference in the lives of hundreds of students every year.

May God continue to bless you and your families and thank you for your support of our mission.

Jenny Schafer  
Director of Advancement



Jenny Schafer

## Challenge - let us set a record for donations from each class 1940-2000

The Annual Fund is the sum of all gifts received through donations. The gifts we receive fall into many categories, including the general fund, student tuition assistance, memorials, and matching employer gifts. Donations to a restricted use, such as Project Lead The Way and scholarships are also listed below. We sincerely thank all of you who supported our mission through your gifts of prayer, time (volunteering)

and treasure. We are truly blessed and we ask that you prayerfully consider continuing your support of our students and our mission.

The class with the highest percentage of classmates donating to their alma mater was the **Class of 1946** with 44% - WOW! We had a three way tie for second place with the **classes of 1947, 1948 and 1950** coming in with 40%. **THANK YOU!**

*I am putting out a challenge to all of you – let's set a record in 2015-2016 and have a donation from every class year from 1940-2000! We were only short by two class years for this 14-15 year. Do you know anyone from the Class of 1998 or 1999? Let's make it happen. All donations need to be received by June 30, 2016 to be considered in the next fiscal year challenge. - Jenny Schafer, Director of Advancement*

### 1920'S

1926

Dr. Joe (Bernadette Peloquin) Monarski

### 1930'S

1934

**Mary Jane Ihle Clark (MC)**

1937

**Susan Ermatinger Cycon (PC)**

1939

**Gerald & Susan Joas (BC)**

Patricia Stumm Hebert (CC)  
Tom & Eunice Steichen Darby  
Charles "Gene" Ruff

### 1940'S

1940

Albina Tichey Bowe  
Harold Gingras

1941

James Sheeley  
Helen Anderl Zutter

1942

Anonymous  
Joan Loiselle Bertie  
David R. Chisholm Family  
Lyle Norquist  
Jeanne Ryan Picotte

1943

**Anonymous (PC)**  
Ed Sneen  
Rose Padruitt Tietz

1944

Anonymous (CC)  
Kathryn Mower Armstrong  
Rosemary La Frania Davies  
Henry & Betty Korgor  
Doris Borneman Young

1945

Vern & Pat O'Driscoll Albrecht

Dorothy A. Hebert

Lois Peloquin Hofkes (CC)  
Helen Dupey Kouba  
Bev Popple Schmidmayr (CC)

1946

James & Patricia Popple Bembnister (CC)  
Gloria Geissler Blum (CC)  
Pat (Robert) Bohl (CC)  
Catherine "Kitty" Chisholm  
Mark Emerson (CC)  
Jim & Evelyn Maloney (CC)  
John & Jeanne Congdon McCluskey (CC)  
Sharon Sullivan McPhee (CC)  
Bernadine Meinen Score  
Jean Forrester Thornton  
Gerald Thornton

1947

Doris Loschko Bohl (CC)  
Marianna Zdrzil Cochran  
James Globensky (CC)  
**Kathleen Thornton Kopp (BC)**  
**Mary Pat McDowell (LC)**

Robert Miller  
**Eugene & Carmen Mower (PC)**  
Gyda (William) Nadreau (CC)  
Norbert Sedlacek (CC)  
Ruth Padruitt Wagner

1948

Anonymous (CC)  
Jacqueline Lauer Anderson  
Jean Lynn Aslin  
James & Patricia Popple Bembnister (CC)  
Mary Wiensch Blanchard  
**David R. Chisholm Family (BC)**  
Ann O'Donnell Egan  
Joan Peloquin Ford (CC)  
**Mylon & Pat Perrenoud Hebert (PC)**  
Eugene "Bud" O'Donnell  
Gerald & Viola Prince  
**Paul Ritzinger (BC)**  
Ramona Yakesh Zumbrock

1949

Anonymous

Anita Peloquin Andress

Juanice "Mitzi" Monarski Crawford (CC)  
Don Johnson  
Shirley Smithers Liedl (CC)  
Dr. Douglas Nelson  
**Marlene Peloquin Rooney (BC)**  
Frances Wild Ruff

### 1950'S

1950

Susan DeLong  
**Ona Jean Coyle Gabriel (GC)**  
Henry & Dorothy Revor Geissler  
David & Virginia Burich Hartmann  
John Hughes Jr.  
Caroline Padruitt Julyan  
Carol Fox Konerik (CC)  
Lucyann Swoboda LeClerc  
Alice Globensky Marshall

**Jean Bergevin Mayer (BC)**

Nancy O'Neil McCarthy  
James Paul  
Marguerite "Skipper" Connell Rank  
Marilyn & John Schneider  
James & Alice Kelly Seitz (CC)  
Agnes "Sis" Shea  
Myles "Mickey" Smith  
Carol Tichey  
Don & Ann Ritzinger Zittleman

1951

Ron Anibas  
Eugene Doucette  
Mary Ann Rieman Erickson  
Patricia Parent Gibe  
Merlyn Gingras  
Carol Zdrzil Gutsch  
Donna Hartman Haley

## Annual Giving Categories

(LC)

**Legacy Circle**  
Annual Gift \$25,000+

(XC)

**Sister Mary Francis**  
**Xavier Circle**

Annual Gift of \$15,000 - 24,999

(MC)

**Father 'Mac'**  
**McGuigan Circle**

Annual Gift of \$10,000 - 14,999

(GC)

**Guardian Circle**

Annual Gift of \$5,000 - 9,999

(BC)

**Benefactor Club**

Annual Gift of \$1,000 - 4,999

(PC)

**Pacesetter Club**

Annual Gift of \$500 - 999

(CC)

**Challenger Club**

Annual Gift of \$200 - 499

**Pioneer Club**

Annual Gift of \$100 - 199

**MACS Club**

Annual Gift up to \$99



Beverly Willette Maurer  
Robert Monarski  
Larry & Maryann Rooney Muldoon  
Ron Rubenzer  
Mary Ann Ruf Schimmel  
Joe & Mary Theissen

#### 1952

Janet Borneman Buckli  
Ralph & Barb Congdon  
Robert & Cecilia Dachel  
Don & Fran Simon Girard

## 26th Annual Golf Scramble Saturday, May 21

Put your four or five person team together now for a day of camaraderie. Win some fabulous prizes.

The banquet will be held in the McDonnell Commons for golfer and guest.

Cost is \$60. Call Timber Terrace at 715.726.1500 to reserve your tee time.

Contact

mcdathbooster@macs.k12.wi.us  
with questions.

#### Rosemary Monarski Haley (BC)

Ruth Hub  
Norma Miller Licht  
LaVonne Stoehr Marquie (PC)  
Mary Lou Klaes Matthews  
William & Karen Moe  
Dayton & Eileen Swoboda Reed  
Lorenz Schreier (CC)  
Winifred Pfaff Shakal  
Joanne Penor Sheehy  
Stephen Steinmetz (CC)  
Charles Wilbur  
Helen Jolliffe Young

#### 1953

Eugene Doucette  
Arnold Franz  
David & Virginia Burich Hartmann  
Janice Loiselle Kroll (CC)  
Bill Lawson  
Glenard & Dorothy Hebert Lieder  
Darlene Geissler Lund  
**Jean Bergevin Mayer (BC)**  
Robert Monarski  
Robert & Joan Simon Morain  
Herman & Mary Lou Nowak Postl  
Delores Schneider  
Mike & Catherine Ryan Sherman  
Mary Kuechenmeister Thornton

#### 1954

Richard Hartman

William Janc  
Donald & Dolores  
Schemenauer Lanners  
Darrell & Jeanette Lynn (CC)  
Carolyn Paul McGrath  
Jean Dietzler Merchant  
Joanne Girard Oleson  
Charlotte Bowe Prince  
Rosemary Meinen Schemenauer  
Francis & Darlene Simon  
Rita Zwiefelhofer Tanzer  
Mary (Richard) Trauba  
Bette Smith Wild

#### 1955

Evelyn Stoehr Arntz  
William Bischel  
Michael Deuel  
Delores Geissler Follensbee  
Lowell & Betty Geissler Glodosky  
Sr. Yvonne R. Hiess, SSND  
Larry & Maryann Rooney Muldoon  
Lawrence & Patricia Nicolai  
Brian Scheidler  
Robert & Judith Sinette Sires  
Natalie Abraham Siverling  
John & Diane Plante Welsh  
Paula Monarski Westberg

#### 1956

Anonymous  
Anonymous  
Arlene Adams  
James & Evelyn Mahr Bandoli  
Francis & Alice Bohl (CC)  
Francis G. Furst  
John & Mary Couture Gabrysiak  
Francis Gaier (CC)  
Richard & Dian Bleskacek Hanley  
Robert & Angeline Skany Holmes  
Linus Knudsen  
Geraldine Bergevin McCaghy  
Vernon & Shirley Meinen (CC)  
Lola Greenwood Orlik (CC)  
Dennis & Judith Thornton Rooney  
Mary Jo Lauer Walker  
Bill Zumbrock

#### 1957

Richard & Marian Kranig Anderson  
Robert & Sharon Pitsch Bell, III (CC)  
Roberta Lehman Bourget  
Bernie & Mary Ann  
Schneider Bromeisl (CC)  
Jerome & Wilhemina Dachel  
Norbert Gaier  
David K. Hebert (CC)  
Ione Swoboda Hebert  
Duane & Betty Ann LeDuc (CC)  
Gerry R. Meade  
Francis M. Nacyes  
Robert & Cecilia Simon Newman (CC)  
**Ellen A. O'Neil (BC)**  
Richard Rooney  
Helen (Willie) Ruf  
Rita Schuebel

Janet Caron Spitzer  
Geraldine Felix White- Marko

#### 1958

Donald Bischel (CC)  
Bernie & Mary Ann  
Schneider Bromeisl (CC)  
Mary Duss  
Lucille Maier Fox  
Irvin Geissler  
Gretchen Schwahn Gruenke  
Terry R. Hagen  
Peter Kalk  
Ron & Barb Kleinheinz Lambert  
Francis & Janice Felix Nazer  
Joseph Oberweis (CC)  
Russell & Sharon Meinen Rowan  
**Gordon & Donna Erickson Schafer (BC)**  
Rev. John A. Schultz

#### 1959

Anonymous  
Kathryn Heerey Biegel  
Richard Blomlie  
Judy Horvatin Gaier (PC)  
James & Diane Glodosky Hickey  
Don & Claudia Hable  
Bruce Potter  
Mary Ann Reith Pozarski  
Dennis Rowan  
Scott & Arline  
Schleppenbach Taylor  
Mike Weigand

### 1960'S

#### 1960

Carol (Patrick) Akan  
Lois Eder Albertson  
Thomas Baier  
Joan Hiess Carey  
Ruth Nicolai Hagedorn  
Neil & Kathryn Derks Haselwander (CC)  
John Hillery  
**Joseph & Janice Janc (BC)**  
Larry & Mary Loiselle Lanners (CC)  
Joanne Bowe Leonard (CC)  
Bill Piotrowski  
Steve Price  
John & Barb Nowak Rasmus (CC)  
Steve & Susan Klaes Zimmerman

#### 1961

**Anonymous (GC)**  
Allan & Mary Lou Peil Burdick (CC)  
Joyce Krumenauer Carpenter  
Anne Monarski Ganka  
Bruce R. Greenwood (CC)  
Michael Hartman  
**Robert & Mary Daniel Jenneman (PC)**  
Bill Klaes  
Marlene (Larry '61) Pinter  
Russell & Sharon Meinen Rowan  
Cecilia Bischel Schemenauer  
Delon & Temple Keefer Schroetter  
Paul & Judy Schultz (CC)  
Carole Blomlie Sturz

Dennis & Sally Andrejeski Wrucke

#### 1962

Anonymous  
Leon & Luanne Bresina Baier  
Ken & Linda Goettl Berg  
**Robert & Bonita Aubart Gelina (BC)**  
Joann Rooney Miller (CC)  
Michael Oberweis  
Robert & Monica  
Steinmetz Penzenstadler  
Jean M. Prueher  
John & Barb Nowak Rasmus (CC)  
Jane Bowe Schill (CC)  
**Skip & Jill Thaler (BC)**  
Patricia Stumm Wagner (CC)  
Lynn Willkom (CC)

#### 1963

Wayne & Judith Bowe Akey (CC)  
Mark & Patricia Bischel (CC)  
Steven & Carol Bohl  
Ted & Anna Bowe  
Ronald & Betty Krall Bresina  
**Richard & Anne Dachel (BC)**  
William & Mary Doucette  
Dennis & Karen Lea Elstran  
Elizabeth Jenneman Garvey  
Don & Fran Simon Girard  
John & Gail Hanson  
Jane Hiess  
Dr. John J. Janc (CC)  
Kay and Keith Klett  
Larry & Mary Loiselle Lanners (CC)  
David & Catherine  
Ritzinger Mcguire  
Roland "Buzz" & Lynne  
Stelter Nelson (CC)  
Charles & Christina Norseng (CC)  
Albert & Carol Schwieters Richard  
Arnie & Diane Ritzinger  
Richard Schneider  
Thomas & Joan Schwartz  
Viola Schuster White

#### 1964

Anonymous  
Leon & Luanne Bresina Baier  
Betty Schemenauer Bohl (CC)  
**Linda Pitsch Brantmeier (BC)**  
Steve & Linda Cyr  
John Geissler  
Richard L. Geissler  
Jerry Halbleib  
Robert & Robin  
Hedington Hassemer  
Michael & Joanne McAleer  
John Porn  
Jim Scheidler  
Terry Wedemeyer

#### 1965

Susan Ritzinger Anderson  
Michael Baker  
Kathleen Zehm Cloutier  
Paula Potter Dietsche

Joe & Marie Hofkes Hauser  
Mary Hebert Hetzel  
Gregory & Mary Monarski Holub  
Linda & Jack Howe  
Kristen Hanson Koiles  
Fred & Roxanne Rooney Kuss  
Carl & Jane Kleusch Laveck  
Charles Loiselle (CC)

**John Lubs (XC)**

Jim & Carol Zenner Meinen  
Bob & Joan Paul Pehlke  
Mary Kay Hebert Piltingsrud  
Stephen & Debra Porn  
Dennis & Judith Thornton Rooney  
James & Judith Loiselle Rubenzer  
**Salmon Foundation (BC)**  
Pam Thornton Irwin Urzykowski

**1966**

Anonymous  
Mike & Vicki Bowe Brown  
Charles & Jane Cyr  
Butch & Kathy Boos Dachel  
Lorraine Horvatin Gardow  
Angelo & Sharon Spaeth Iatridis (CC)  
Ann Loew  
Rita Oberweis (CC)  
Larry & Paulette Boos Popp  
Albert & Carol Schwieters Richard  
Eugene & Bonnie  
Swoboda Schindler  
Thomas & Victoria Stumm  
James Tannler

**1967**

Terry & Mary Kay Kuba Bodeen  
Paul Boetcher  
Butch & Kathy Boos Dachel  
**Chuck & Jo Frenette (BC)**  
Robert & Robin  
Hedrington Hassemer  
Jeanne Hebert (CC)  
Bernard Morrissey  
Robert Norquist  
Pat & Sue Larue Quinn Recreational Fund  
of the Eau Claire Community  
Foundation (CC)  
Deborah Gorton Ritzinger  
Susan Schmidmayr Schamberger  
Jim Simmons  
Jim Smola  
Dennis Steinmetz  
**Tom Voitl (PC)**  
Jane Waldusky Von Feldt

**1968**

Dennis & Jeanne Quigley Boisvert (CC)  
Joseph & Alice Bowe  
Mike & Vicki Bowe Brown  
Eugene Dachel  
Scott & Kathie Emerson (CC)  
Brenda Erickson  
Marge Geissler  
Kathryn Schell Georgeson  
Carol Rowan Heyde (CC)  
Suzanne Hurt Leirimo

Wayne M. Peterson

**1969**

Robert & Jacque Boos Anderson  
Dan & Kathy Martin Eder  
Wilf Hebert  
Jack & Susan Feider Kelly  
Ann Piotrowski (CC)  
Henry Schneider  
**Walter Swoboda (PC)**

**1970'S**

**1970**

Dr. Richard Borman  
John & Susan Hebert Flanagan  
Terry & Lois Jacobson  
Robert & Susan Gindt Konop  
Mark Morisette  
Charles Roecklein  
**Steven Thaler (MC)**

**1971**

Randy & Marilyn Bowe  
Jeff & Alice Buchberger Heinzen (CC)  
Ted & Dar Joas  
Eric & Kay Bresina Kurz  
Kathy Rooney Reiter  
Richard & Mary Rose Bell Willi

**1972**

Tex-Wis Inc. (CC)  
**Paul Bembnister (BC)**  
William & Julie Harings Berg  
Daniel & Carol Steinmetz Meagher  
WiJo & Jan Sazama  
Sandy Raawe Schumacher

**1973**

David & Julie Bembnister Clark  
Mary Crawford  
Larry & Kathy Connell Dahl (CC)  
John & Terese Ruhe Knutson  
John L. Larson  
Mike & Karen Marquie Lutz  
Edward Verbracken (CC)  
Gary & Debra Goettl West

**1974**

Tom & Maria Cooney  
**Stephen & Patricia  
Amelse Ellenson (BC)**  
Debbie Tannler Heath  
Mary Jo Ford Kobyluk  
Robert & Susan Gindt Konop  
Jeff & Sharon Farley Martin  
Catherine Peck (CC)  
Nancy Smith  
Bill Weber

**1975**

Denise Faschingbauer Feigum  
Pam Gartmann  
**JEH Government Services, Inc. (LC)**  
Dan & Susan Globensky Jacobson (CC)  
Dr. Randolph L. LaRue  
Denny & Roxanne Bohl Murphy

Mike & Christine Peterson (CC)  
Steve Wermund  
Tom Zutter

**1976**

Anonymous  
**James & Nancy Bischel (BC)**  
Theodore Blum (CC)  
John Hibbard  
Marty & Pam Hunt (CC)  
Dan & Susan Globensky Jacobson (CC)  
Nick Larson  
Karen Reiter  
Kathy Vils-Quarberg

**1977**

John & Beth Leis Bauer  
Anthony & Tammy  
Postl Christopher  
Terese Globensky  
Mary McDonald  
Pete & Kathy Marquie Sokup (CC)  
Sandra Thornton Winrich

**1978**

Jeff Hutchinson  
**Gerald & Mary Wermund Jacobson (GC)**  
Daniel & Carol Steinmetz Meagher  
Pete & Kathy Marquie Sokup (CC)

**1979**

**Anonymous (BC)**  
William & Lauri Hansman  
Anderson  
Jane Davis (CC)  
John & Laurie Armstrong Francis  
Wes Moskal (CC)  
Ronnie Ruf  
Brenda Prince Sanford  
Paul Sokup Jr

**1980'S**

**1980**

Mark & Kim Waldusky Amelse  
Jeffrey & Karen Sedlacek Harings  
Mike & Karen Marquie Lutz  
**Brian & Ann Mitchell (BC)**  
Scott & Jodyne Dachel Pulver  
Tom & Becky Rubenzer  
Jeff & Deborah Schneider Schafer  
**Sean & Becky Postl Sinette (PC)**  
Joe Sommerfeld  
James Vils  
Mike & Debi Waldusky

**1981**

**Tom & Pam Davis (BC)**  
**Susan Sokup Fauver (PC)**  
Tom & Mary Huffcutt (CC)  
Dan & Laura Liddell

**1982**

Chuck & Jenny Schafer (CC)

**1983**

Pat Horan

Jackie Hunt  
Michele Beaudette Koch  
Paul Secraw (CC)

**1984**

**Anonymous (BC)**  
**Denise Boos (PC)**  
Tony & Jeanne Pecka Eckert  
Jim & Lori Bohl Eisenreich  
Rhonda Atkinson Fisher  
Peter & Lisa Rasmus Haley  
Jason & Kellie McCombs Hiess  
Todd & Debbie Baier  
Schemenauer  
Jean Schemenauer  
Joseph & Kari Hosley Theisen

## Alumni Gathering and Hall of Fame Induction

Sat., April 30, 2016

Following 4:00 PM Mass at  
St. Charles Borromeo Parish  
Register online MACS website  
alumni page, email or call  
Jenny Schafer  
at 715.723.0538  
j.schafer@macs.k12.wi.us

Cost per person is \$15 or  
two people \$20  
held at

Bye the Willow in Chippewa Falls.

**1985**

Anonymous  
Brian & Kara Murphy Heidtke  
Timothy Mrozinski  
Scott & Michelle Franz Retzlaff  
Tim & Anne Hutton Stremcha

**1986**

Anonymous  
Kevin & Krista Hosley Alberts  
Joe & Meg Borman  
Melissa Bowe  
Thomas & Valerie Cushman  
Katie Hartsough  
Dennis & Annette Hunt  
Pat & Bridget Boiteau Kurtenbach  
**Robert & Sherri LeDuc (XC)**  
Hans & Becky Bohl Lyberg  
Jeff & Lynn Lembezeder Newton  
**Sean & Becky Postl Sinette (PC)**  
Michael & Lisa Stoffel

**1987**

Scott & Shari Bromeisl (CC)  
John & Sarah Jane  
Maniquiz Liveringhouse



Dave & Michelle Willkom  
Markquart (CC)  
Dan Reed  
Tony & Heather Goettl Thornton (CC)

1988

**Anonymous (LC)**

Michael & Tristi Crawford  
Jeff & Lynn Lembezeder Newton  
Rev. John Potaczek

1989

Michael Akan  
**Reggie & Lori Lubs Geissler (PC)**  
Cindy Lijewski  
Tim & Lori Scheidler Lorentz  
Tony & Heather Goettl Thornton (CC)

**1990'S**

1990

Krista Misener

1991

Todd & Jodi Schemenauer Bresina  
**Reggie & Lori Lubs Geissler (PC)**  
Darin & Ann Crawford  
Schemenauer

1992

**Anonymous (BC)**

Michael & Jennifer Wedemeyer

1993

Todd & Jodi Schemenauer Bresina  
Carl Smiskey

1994

Matthew & Libby Cyr Leinenkugel  
Lee & Mandi Geissler Schmidgall  
Kevin & Tammy Swoboda

1995

Josh & Amy Meinen (CC)  
Jon & Jennifer Bowe Willi

1996

Ryan & Danielle Markquardt  
Stelter (CC)

1997

Pat & Bridget Boiteau Kurtenbach  
Laura Zwiefelhofer Zach (CC)

1998

1999

**2000'S**

2000

Jacob Hepfler (CC)  
Bobby J. Swoboda (CC)

2001

2002

2003

Hiep & Mary Phung (CC)

2004

2005

2006

Michael Amundson

2007

2008

Charlene & Chris "Chicago"  
Coulombe '08

2009

Breanna Jenneman

**FRIENDS**

**Anonymous (BC)**

Anonymous

**Anonymous (GC)**

Anonymous

Anonymous

Anonymous

**Anonymous (PC)**

Anonymous (CC)

Anonymous

Anonymous (CC)

Mike Burger

**Class of 1964 (PC)**

Raymond J. Nazer (CC)

Brother Roger Betzold

Becky & Gerald Bowe

Mary Sue & Bob Briggs

Rik & Cathy Greenseth (CC)

Lisa & Thomas Hubbard (CC)

Rita J. Nowak

Tami & Nick Pieper

**Steve Roesler (BC)**

Pete Biletzky

**Gary & Pat Gray (BC)**

Karen Matott (CC)

John & Stephanie Abbe (CC)

Jon & Karen Andersen

Russell & Lynne Bauer

Ritch & Pam Baughman

Thomas & Kathleen Biskupski

Jon & Tamara Bohaty (CC)

Chad & Tracy Bormann

Andy & Erin Borofka

Barry & Lori Bremness

Mark & Kim Broses

Bill & Jennifer Buescher

Adam & Beth Burmeister

Justin & Amanda Busse

Eric & Molly Craker

James & Jodi Cranston

Michael & Michelle Deetz

Matt & Melissa Dorn

**Peter Farrow (LC)**

Christopher & Tracy Fischer

**Dave & Tracy Kuehni-Flanagan (BC)**

Charles & Karen Goettl

Lori Hagen

Paula & Sean Hanson

Gerald & Corina Kolanczyk

Matt & Michelle Kressin

Andrea Krulik

Karen McCabe

Pat & Mary McDonald

Cindy Van Domelen

Greg & Kelly Misfeldt

Troy & Jennifer Moen

Ben & Sarah Mosack

Charles & Tina Ochs

Scott & Beth Opsal

Robert & Barb Parkhurst

Buckley & Loree Rawhouser

**Jim & Jennifer Rooney (BC)**

**Travis & Sarah Rowan (BC)**

Joe & Carly Rubenzer

Joe & Kristy Lemay Rubenzer

**Nadim Salfiti & Keegan**

**O'Keefe Salfiti (GC)**

Charlene Schaumberg

Sarah Schultz & Charles Wirtz (CC)

Daniel & Kathryn Schwandt (CC)

Robert & Jennifer Shakal

Seth & Tracey Smiskey

Scott & Patricia Tambornino

Jon & Kelly Tokarski

Travis & Erica Ullom

Michael & Betsy Wacker (CC)

Christopher & Jamie Witkowski

Tom and Sue Zwickel

Kattie Bergeron

Thomas & Doris Bremness

Robert Buonincontro

Matthew & Jean Dilts

Julia Gehring

Jerry Hartung

Judy Hartung

Karen Holden

Carson Honaker

Marilyn Kademan

Linda Lyman

Connie Mosack

Shirley Ann Rosenow

M.C. Shervy

Paul & Darlene Sieg

John Snyder

Fred Stary

James Steltenpohl

Maureen Therou

Pat & Patty Hare

Eugene Krhin (CC)

Dennis Kurtz

Tim Molak

Joanne M. Sobieski

Jean Wacker (CC)

Jerry & Carol Way

Franklin & Vicky Beaudette

William & Mary Brunstad

**Patricia Cuddy (BC)**

Wayne & Teresa Dachel

**Ronald & Sheri Gauger (PC)**

Geraldine Goulet

**Darrell & Leona Hart (PC)**

Julie Kahl

Joseph Monarski

Charles & Bernadette O'Donnell (CC)

Marge Rhodes

**William & Nancy Scobie (BC)**

Bernard Willi

Steve & Maggie Wojan

Richard Fritz & Lisa Mullen

Helen Bibler

Campbell Alliance

Jennifer Docherty

Kathleen Endert

Kay Evanson

Gerald & Janice Giedd

Paul & Gay Gilbertson

Patrick Gingras

Gertrude Gripentrog

Donald & Barbara Hartman

Art & Laura Hebert

Scott & Melissa Jiles

Ari & Lauren Kaplan

Keith & Mary Kaufman

Jane Kellen

Michael & Diane Kelly

James & Alice Kissinger

Raymond & Janet Klimovitz

Saretta Lemke

Dick & Judy Lewis

Edwin & Kimberly Martinez

Conrad & Judith Mazur

David & Terese McCall

Hess Morrison

Mike & Beth O'Donell

Pat Pecha

Robert Penn

Laurie Pierner

Rodney & Janet Pike

Dennis & Ellen Plantz

Sid & Marilyn Qualley

Ruth Rogers

Ryan & Nicole Schindler

Marilyn Smith

Glenn & Judy St. Arnault

B.J. Swain

Robert Taylor

Richard and Teresa VanGelder

Wayne Weber & Maureen Endert

Donald & Dorothy Wiecher

Matt & Lynn Amundson

Jennifer Armstrong (CC)

Mark & Kay Baker (CC)

Clarice Berg

Ron & Jolene Berg

Roger & Catherine Bohl

Don & Cheri Breault

Al Buchberger

Eugene & Jackie Cody

Charlene & Chris "Chicago"

Coulombe '08

Lester & Rosemary Davis (CC)

Eugene J. Eder (CC)

Deb Erickson

Jeff & Lisa Flaig

Daniel & Connie Freagon

David & Patricia Gutknecht

Vivian B. Hanson

Dolores Schindler Hebert

Betty Hedrington

**Harold & Marian Hunt (BC)**

Leroy & Patty Jansky

Nicholas & Denise Krajewski

**Jerry & Mary Kuehl (PC)**  
 Allen & Linda Mans  
 Bob & Chris Maslonkowski (CC)  
 James & Anne Mitchell  
 Joe & Sandy Molumby  
 Leonard & Nancy Mondeau  
 Kenneth & Peggy Nehring  
 Russ & Barb Nelson (CC)  
 Nila Newton  
**Tom & Karen Olson (PC)**  
 Dan & Jeanette Prince  
 Mary Lou Pulver  
 Douglas & Vicki Schemenauer  
 Michelle Schneider  
 Barb & James Schofield  
 Des & Valerie Sikowski-Nelson  
 John & Deanna Suilmann (CC)  
 Michael & Rita Sullivan (CC)  
 Dan & Mary Lynn Toycen (CC)  
 James & Lillian Van Helden  
**Kent & Sheri Vandehaar (BC)**  
 Rusty & Mary Volk  
 Dr. Ned & Lou Ann Willkom  
 Gary & Cindy Yohnk  
**Rev. Al Sonberger (BC)**  
**Tom Lambert (BC)**

## BUSINESS & COMMUNITY FRIENDS

Abbott Laboratories (CC)  
**Amgen Foundation (BC)**  
**AnnMarie Foundation (XC)**  
 Autumn Harvest Winery LLC (CC)  
**AWS (PC)**  
**B.A. Mason Trust (LC)**  
**Baughman Sewer & Septic Services (PC)**  
 Bishop's Education Endowment Trust (CC)  
**Bloomer Ford (BC)**  
 Bohl & Proulx Plumbing, Inc.  
 CBS Squared  
**Chippewa Falls Catholic Womens Club (BC)**  
**Church of the Holy Ghost (LC)**  
 Davis Selected Advisors (CC)  
**DOA Pesticide Service LLC (BC)**  
 Dr. Lona Cook  
**Edward Rutledge Charities (XC)**  
 Elite Karate Studios, LLC  
 Gish Photography

**Gordy's County Market (BC)**  
**Heartland Contractors (BC)**  
**Holy Cross Church (BC)**  
**Horan Funeral Home (PC)**  
 John R. & Ellen A.  
 O'Neil Endowment  
**Joseph W Joas Designated Endowment Fund (BC)**  
**Knights of Columbus (BC)**  
**Kristo Orthodontics (PC)**  
**Leonard G Hart Estate (LC)**  
**Mason Companies, Inc. (BC)**  
**Mayo Clinic Health System (PC)**  
**McDonnell Alumni Association (BC)**  
**McDonnell High School Foundation (LC)**  
 Nestle Foundation  
**Nordson Corporation Foundation(MC)**  
**Northwestern Bank (MC)**  
 Northwestern Mutual Foundation  
**Pat & Gary Gray Family Endowment Fund (BC)**  
 Raymond James Financial (CC)  
**Religious Care Foundation (LC)**  
 Rooney Printing Co. (CC)  
 Roy DeShane Elementary School  
**Sacred Heart Church (GC)**  
 Securian Foundation  
**Spring Street Sports Inc (PC)**  
**St. Charles Borromeo Church (LC)**  
**St John the Baptist Church (BC)**  
**St Paul Church ((BC)**  
**St Peter the Apostle Church (LC)**  
**St Rose of Lima Church (BC)**  
**St. Bridget Church (GC)**  
**St. Joseph's Hospital (PC)**  
**Stelter Inc. (BC)**  
 Thaler Oil Company (CC)  
**The Church of Notre Dame (LC)**  
 TTM Technologies (CC)  
**U.S. Bancorp Foundation (PC)**  
 United Hardware Distributing Company  
**Wal-Mart Foundation (BC)**  
**William & Gertrude Casper Foundation (GC)**

## Matching Gifts

Does your employer have special funds designated for community donations? Check with your employer – many large companies have charitable giving divisions along with matching gifts. Some employers, like Wal-Mart and US Bank Corp., will give a donation in honor of the hours that their employees volunteer at an organization.

We are blessed to live in a country where so many people and companies give back. *Your employer may be one of them.*

### Abbott Laboratories

Thomas Prueher and James Seitz

### Amgen Foundation

Anonymous

### Davis Selected Advisors

Bill Wenzel '75

### JP Morgan Chase Foundation

James Meinen

### Mayo Health Systems

Dr. Mary Kuehl, Dr. Nadim Salfiti, Dr. Kelly O'Keefe-Salfiti  
 Dr. Charles Wirtz

### Northwestern Mutual Foundation

Eugene Krhin

### Securian Foundation

Michael Akan '89

### US Bank Foundation

Jennifer Moen

### Wal-Mart Foundation

John Abbe

## In Honor of Gifts

On behalf of the kindness of my son Christopher, aka "Chicago" '08 - Charlene Coulombe  
 In celebration of Rosemary Monarski '52 Haley's 80th birthday - Anne Ganka  
 In honor & memory of my siblings - Francis Naves

## Memorial Gifts

Doris Loschko Bohl '47  
 Tom Bye  
 Rev. Jeremiah Cashman  
 Ken Eder '63  
 Rev. Dan Farley '76  
 George Gannon  
 Leonard G. Hart  
 Donna Pouliot  
 Johnson '49  
 Frederick John Julian  
 Margaret Kemper

Shirley Krhin  
 Francis Martell  
 Gary Matott  
 Bernadette Peloquin  
 Monarski '26  
 Elizabeth Norquist  
 Larry Pinter '61  
 Dorothy Ritzinger  
 Rowan '35  
 Francis & Marie Schindler  
 Bob Schultz '29

John Smith '48  
 Charles "Chuck" Smith  
 John '47 & Angie  
 Sokup '47  
 Arnold E. Stelter  
 Margarite Myre  
 Stensrud '34  
 Bernadette Theissen  
 Weis '52  
 Don Wild '48  
 Charles Zdrzil '48

## In-Kind Donations

Baughman Sewer & Septic Services  
 Bohl & Proulx Plumbing  
 Chippewa Family Restaurant  
 Elks Lodge #1326 Chippewa Falls  
 Gish Photography  
 Jason '84 & Kellie McCombs Hiess  
 Val Knobloch  
 Jerry & Mary Kuehl  
 McDonald Company  
 Pat & Mary McDonald

Terri Misener  
 Reither Fencing  
 Rooney Printing Company  
 Bob & Jenn Shakal  
 Spectrum Industries  
 Stelter, Inc.  
 Sean Vogt  
 WHG Company  
 Z Sign Company  
 Jeff & Margaret Zander



# Financial Report

The 2014 - 2015 fiscal year ended this past June 30, 2015. MACS finished the year with operating revenues of \$3,869,711 and operating expenses of \$3,953,272. This resulted with an operational deficit \$83,561 excluding the non-cash depreciation expense. Several revenue categories experienced increases, but our general fund donation category was down. This was because some donors redirected their gifts to restricted gifts, thus helping MACS to prepare for future budgets.

Scrip sales decreased from \$1.965 million the previous year to sales of \$1.934 million, this was a 1.6% drop. This resulted in a Scrip profit of \$116,288, of that amount, \$52,689 was given back to families as tuition credit. This is a great program that has potential for more growth and is a wonderfully easy way for everyone to painlessly help the school system by purchasing through the school. Scrip gift cards are for the products and services that you regularly use on a daily basis.

The expense categories increased over prior year by \$337,261. Contributing factors were wages and

salaries of \$263,000, benefits of \$33,000, liability insurance of \$24,500, and food supplies of \$14,000. Restricted Fund revenue covered \$140,000 of the salary increase, and added staff and wage adjustments made up the balance. With the buildings being revalued, our cost of insurance increased accordingly. The rising cost of health insurance and food also added to the increased expenses.

As a school system we are again very fortunate to have such generous support from our parishes, alumni, area businesses and friends that we were able to have and use funds previously reserved and to raise an additional \$525,160 for specific restricted purposes.

We thank you for your continued financial support as we plan for the future of our Catholic schools to ensure their financial stability.

*Our promise to all of our generous donors, families and benefactors is to be the best possible stewards of your gifts and our resources. We are in the process of doing some energy management programs that will help to control our utility costs for the future.*

## Thank you to our Corporate Partners . . . . .



## and Corporate Sponsors

Horan Funeral Home  
Pederson-Volker Funeral Chapel  
Stelter, Inc.

We appreciate all that you do for MACS and our Chippewa Falls community!

## STUDENT TUITION

As a direct result of the generosity of alumni, parishioners, businesses and friends of the McDonell Area Catholic Schools, we have been able to maintain tuition below national averages. **Tuition and fees paid by families is 28% of the total revenue.** The difference between the per-pupil cost and the tuition charged is obtained in many ways. **Parish subsidies provide 24%. The remaining 48% of the per-pupil cost will come from advancement programs, fundraising activities and other resources.**

Families, who belong to a supporting parish and meet the criteria for active supporting parish member, qualify for the supporting parish assisted tuition. Additional financial assistance is available for active parish members based on financial need.

### YEAR 2015-2016 Tuition

	YEAR 2015-2016 Tuition		Total cost to educate a student 2015-16	
	Grades K-8	Grades 9-12	Grades K-8	Grades 9-12
<b>Active Catholic Parish Member</b>	\$2,765	\$3,900	\$6,307	\$9,193
<b>Non-Active Catholic Member</b>	\$3,955	\$5,580	\$6,307	\$9,193

MACS now has a multi student discount per family in place for the 2015-2016 school year. The discount is as follows: the third student minus \$400, the 4th student \$850, the 5th student \$1,500, and the 6th student \$2,100.

**\*Active parish members** of *supporting parishes* are eligible for the active parish member tuition. The supporting Chippewa Falls Deanery parishes are:

All Saints Catholic Parish  
Holy Cross, Cornell  
Sacred Heart of Jesus, Jim Falls  
St. Bridget, Springfield  
St. John the Baptist, Cooks Valley

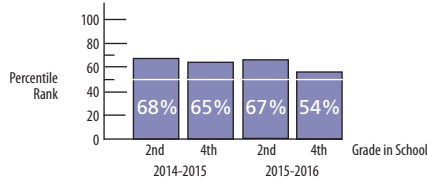
St. Paul's, Bloomer  
St. Peter the Apostle, Tilden  
St. Charles Borromeo, Chippewa Falls  
Church of the Holy Ghost, Chippewa Falls  
The Church of Notre Dame, Chippewa Falls

“ Thank you to the priests and parishioners for your support of Catholic education, mind, body, spirit and community. ”

## Iowa Test of Basic Skills

The Iowa Test of Basic Skills (I.T.B.S.) /CogAT was administered in second grade at St. Charles Borromeo Primary School and fourth grade at Holy Ghost Elementary, in the fall. Our percentiles are based on national school norms.

[ White horizontal line indicates the national average ]



## ACT Aspire Summative Exam National Percentile Rank

Year 2014-15	ENGLISH	READING	SCIENCE	MATH	WRITING
Grade 6 Class of 2022	77 %	46 %	77 %	57 %	80 %
Grade 8 Class of 2020	61 %	70 %	51 %	65 %	44 %
Grade 10 Class of 2018	63 %	57 %	69 %	65 %	90 %

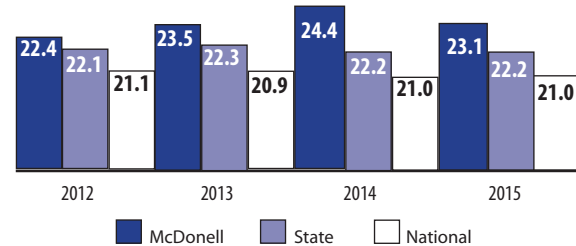
Although test information is helpful in monitoring the student's academic growth, it does not measure many other areas important to the development of the whole child. The data provides the schools with information to plan future goals and objectives to meet the needs of the children in those academic areas.

## Student ACHIEVEMENT

### A.C.T. College Test

The A.C.T. test is taken every year by McDonell Central Catholic High School students. The A.C.T. report reflects the achievement of McDonell graduates to the extent to which they are prepared for college-level work. The A.C.T. consists of curriculum-based testing of educational development in English, mathematics, reading and science designed to measure the skills needed for success in first-year college course work. The maximum possible score on the A.C.T. test is 36. The table shows the four-year trend of our students compared to the state and national averages.

### A.C.T. Test Average Composite Score



## Scrip Business Gift Card Fundraising Program

### 2015-2016 Scrip business gift card vendors

29 Pines  
4:30 am Coffee  
Amazon  
American Eagle  
American Girl  
Applebees  
Arby's  
Baier's Pizza  
Bake & Brew  
Barnes & Noble  
Bath & Body Works  
Best Buy  
Bridgewater  
Restaurant  
Buffalo Wild Wings  
Burger King  
Cabela's  
Caribou Coffee  
Cenex River  
Country Co-op  
Children's Place  
Chippewa Family  
Restaurant  
Chippewa  
Hardware  
Culvers  
Darden Restaurants  
DJ Mart's  
Domino's Pizza

DQ Dairy Queen  
Eddie Bauer  
Eric's Diamonds  
Express Marts  
Fanny Hill  
Fantastic Sams  
Farm & Fleet  
Fazoli's  
Festival Foods  
Game Stop  
Gander Mountain  
Gap  
Goldsmith  
Coffee Bar  
Goodies  
Gordy's Market  
Great Clips  
Heckel's  
Holiday Station  
iTunes  
JC Penneys  
Joann Fabrics  
Kohl's Dept Store  
Kwik Trip  
Lands End  
Little Caesars  
Macy's  
Main St. Café  
Martell Tire

McDonald's  
Mega Foods  
Menards  
Metropolis Resort  
Michaels  
Noodles & Co.  
Office Depot  
Office Max  
Ojibwa Golf & Bowl  
Olsons Ice Cream  
& Deli  
Panera Bread  
Papa Murphys  
Pet Smart  
Pizza Hut  
Red Robin  
Scheels  
Sears/Kmart  
Shadick's Price  
Rite  
Shopko  
Shutterfly  
Sokup's Market  
Sports Clips  
Spring Street  
Sports  
Starbucks  
Subway  
Taco Johns

Target  
Texas Roadhouse  
TGI Fridays  
Thaler Oil  
Travel Leaders  
Walgreens  
WalMart  
Wendy's  
Wissota Meat  
Market  
Youngers

In 2014-2015, **\$52,689** was given back to families as tuition credit for the 2015-2016 school year!

MACS would like to thank all the priests, parents, guardians, alumni, parishioners, volunteers and friends who use the Scrip business gift card program. Your support of our Catholic school system and parishes is greatly appreciated.

You can view and choose national and local Scrip online at [www.shopwithscrip.com](http://www.shopwithscrip.com).

#### MACS CENTRAL OFFICE HOURS

Monday - Wednesday  
7:00 a.m. - 4:00 p.m.

Thursday  
7:00 a.m. - 6:00 p.m.

Friday  
7:00 a.m. - 4:00 p.m.  
CLOSED Fridays during  
summer months  
and some holidays.

Scrip gift cards are in inventory and sold in the MACS Central Office and at parishes during weekend Masses. *THANK YOU to our volunteers who make this happen every week.*

To learn how you can use the Scrip program to help a child or future family with school tuition costs, please call the MACS Central Office at 715.723.0538.



# CLASS NOTES

## Class shout outs

### 1940s

Grandson of the the late **Lucille Zwiefelhofer '42 Sedlacek** Daniel Sedlacek will be ordained a Priest for the La Crosse Diocese on Saturday, June 25, 2016 at the St. Joseph the Workman Cathedral in La Crosse. He is a member of Holy Cross Parish in Cornell where he will celebrate his first Mass on Sunday, June 26 at 2:00 PM. All are welcome to attend.

### 1980s

**Jeff '86 and Lynn Lembezeder '88 Newton** were named Festmeister and Festmeisterin of



the September 2015 Oktoberfest. This was the 13th annual event sponsored by the Chippewa Falls Chamber.

### 1990s

**Vicki Bedell '90 Larkowski** earned her Bachelor of Arts degree from University of MN Twin Cities with a major in Technical Communications and Texts.

**Lt. Col. Matt Larkowski '90** retired from active duty from the United States Air Force on January 1, 2016. *Thank you for your service to our country Matt!*

## Holy Matrimony Engagements

**Michael Amundson '06 and Allison Greenseth '09** were married on Saturday, October 24, 2015 at St. Charles Borromeo Parish in Chippewa Falls. Michael is a high school Physics and Math teacher, Allison is a Pharmacist



Briggs'11 Photography

Technician. They reside in Horicon, WI

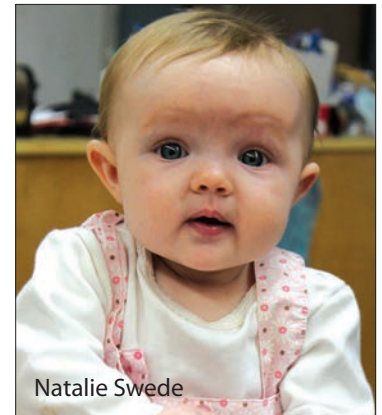
## Blessings of a birth



Blake Samuel

2015. *Welcome Blake future McDonell class of 2033!*

**Jonathan '00** and Erin Jansky welcomed a new baby boy into their family. Declan Fredric was born on July 10, 2015 weighing 8 Lbs., 14 oz. and measuring 22 in. long. Declan joins his excited big brother Evan (almost 4 years old) and big sister Brynn (2 years old) at home. *Welcome Declan future McDonell class of 2033!*



Natalie Swede

**Scott '02 and Amanda Berg '02 Peloquin** welcomed their daughter, Natalie Swede, on July 17, 2015. She joins brother Evan (6) and sister Nora (4) in Rochester, Minnesota. *Welcome Natalie!*

## Tuition Scholarship Spring Phone-A-Thon

It's time for the annual Spring Phone-a-thon! This annual event is focused on raising money for our tuition scholarship fund. **Our partner for success with this event is J. Milito & Associates and they will begin making phone calls on April 12, 2016.** If you haven't made a donation to MACS yet this year, now is the time. Make your donation by April 12th and we will take your name off the calling list.

Your generosity will help families, who might not otherwise be able to, provide a Catholic education for their children. You will make a difference in the life of a child. Simply use the envelope provided in the Mack Messenger or go online to [www.macs.k12.wi.us](http://www.macs.k12.wi.us) - Support Macks to make your gift.

*Thank you for making a difference!*

**Samuel '07 and Ashley Meinen '08 Rubenzer** welcomed their son Blake Samuel on May 13,

continue Class Notes page 18

Below: Class of 1957 Sally Bensen (left) from Carlisle, KY came unexpectedly to visit her Alma Mater and was surprised when classmate Ellie O'Neil (right) stopped in at McDonell High. They had not seen each other for years.



**Tony '07 and Justine Schafer '07 Willkom** welcomed their son, Graham Nicholas, on September 18, 2015. He joins big sister Aubrey. *Welcome Graham future McDonell class of 2034!*



Jason August '01 and his wife Pam welcomed their son, Carter Michael, on December 10, 2015. They reside in Texas. *Welcome Carter!*

**Eternal rest grant  
unto them, O Lord**

**Thomas J. Hebert, Sr., Class of 1936** November 3, 2015, Chippewa Falls, WI

**Mae Scheidler Willkom, Class of 1939** September 19, 2015, Thorp, WI

**Kathleen Cosgrove Plante, Class of 1944** October 29, 2015, Chippewa Falls, WI

**Bertie Thompson, Class of 1946** October 30, 2015, Rice Lake, WI

**Donna Pouliot Johnson, Class of 1949** May 10, 2015, Bloomington, MN

**Norman A. Boos, Class of 1951** December 23, 2015, Cadott, WI

**Richard Trauba, Class of 1954** June 10, 2015, Andover, MN

**Delores Ruf Burtness, Class of 1956** January 6, 2015, Chippewa Falls, WI

**Thomas F. Armstrong, Class of 1957** December 26, 2015, Altoona, WI

**William "Willie" Ruf, Class of 1957** December 27, 2015, Chippewa Falls, WI

**Glen Geissler, Class of 1960** December 5, 2015, Chippewa Falls, WI

**Robert J. Kreiling, Class of 1965** November 26, 2015, Chippewa Falls, WI

**Keith Ziehr, Class of 1982** August 23, 2015, Chippewa Falls, WI

## FRIENDS

**Jessina "Jess" Dineen**, Aunt of current students, music tutor to many students

**Alsadie "Sadie" Friedeck**, parent of McDonell graduates

**Edwin "Ed" Horan**, parent and grandparent of McDonell graduates and current students.

**Eugene J. Goettl**, spouse of **Phyllis Bowe Goettl '59**

**Amos F. Konop**, parent of McDonell graduates

**Gerald Marko**, brother of **Francis '58 Marko**

**Lt. Col. William Reiter**, brother of **Richard "Dick" Reiter '52**

**Josephine Alice Marie Samb**, infant daughter of **John '03** and **Jessica Samb**

**Iris Secraw**, parent of McDonell graduates

**Raymond P. Sedlacek**, spouse of the late **Lucille Zwiefelhofer '42 Sedlacek**

## Class Reunions

### 1966 - 50th Class Reunion

The McDonell Student Council is very excited to be hosting the class of 1966 for Mass and lunch on Wednesday, April 27, 2016 at 10:30 AM at the high school.

The class of 1966 will celebrate their 50th class reunion this year on Saturday, August 20, 2016. They are planning a possible tour of the Heyde Center (former McDonell Memorial High School) and then Mass at 4:30 PM held at the Notre Dame Life Center, with the Church of Notre Dame under restoration. Social and dinner will be held at the Avalon Hotel and Conference Center in Chippewa Falls following the Mass.

Contact Kathy A. O'Connell Bowe by calling 715.723.3286 or email [boweka@sbcglobal.net](mailto:boweka@sbcglobal.net) for more information on the reunion or if you can attend the gathering with the McDonell High School students on Wednesday, April 27. Look us up on Facebook - McDonell High School Class of 66.

### 2006 - 10 Year Reunion

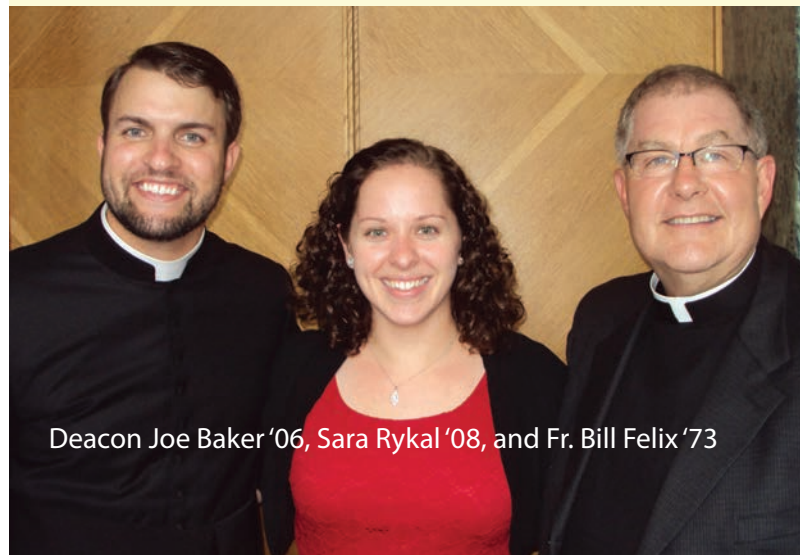
Our 10 year class reunion will be held on August 20, 2016 at the Fill Inn Restaurant in Chippewa Falls from 6:00-10:00 PM. Contact Becky Hofkes for more information by email [hofkesrm@gmail.com](mailto:hofkesrm@gmail.com) or find her on Facebook.

## Greetings from Rome

Fr. Bill Felix '73 traveled with a group to the North American College in Rome, Italy to participate in the Diaconate Ordination of McDonell alum Joe Baker '06 this past October 1, 2015. Sara Rykal '08 shared this photo below of the three of them after the ordination.

God willing, Joe will be ordained to the Priesthood in the Diocese of Madison on Friday, June 24, 2016. Deacon Joe is planning a Mass of Thanksgiving at St. Charles Borromeo Parish in Chippewa Falls on Sunday, June 26 at 10:30 AM. All are invited to attend.

*Congratulations Joe on your Diaconate!*



Deacon Joe Baker '06, Sara Rykal '08, and Fr. Bill Felix '73



## McDonnell Memorial High School Class of 1950 reunion rekindles friendships

Twenty-two classmates and their 14 guests assembled in August of 2015 for a 65th reunion at the Bridgewater Restaurant to renew friendships and recall memories.

The reunion committee recommended meeting on a yearly basis and will look at both one and two year options for their next reunion. Mr. Gene Krhin gave some impromptu comments and reminded everyone he is 93 years old, and 10 years senior to those assembled. His students

responded with gratitude for Gene's mentoring and serving as a positive role model for the Class of 1950.

Another invited favorite teacher, Mr. Gerald Schaefer, could not attend and he sent an informative letter which was read to the class. "Gerry" taught public speaking, debate, dramatics, agriculture and sociology.

The reunion wrapped up on a high note, by singing the Alma Mater, led by Don Rada. As a follow-up to the fun

afternoon, all classmates received a full-color, two-page newsletter with photos and commentary. An all-out effort is being made to contact the few classmates with "unknown" whereabouts. Future communications sharing by email and postal mail was promised to help create a closer bond; especially as this class grows older. Friendships and memories become even more important as each year passes by.



(Left) Special guest at the reunion Mr. Eugene Krhin (center), is a favorite teacher and role model for his former "1950" students. Gene is remembered for his advice in vocational guidance, classes in world history, religion and directing choir, and especially for his patience and calm demeanor. Gene is pictured with Alice Globensky Marshall and Susan DeLong.



## Class of 1975 Reunion 40 Years!

Last summer the class of 1975 gathered for their 40th reunion. They had a nice meal for at the Rumor Mill in Chippewa Falls. Those in attendance were: John Hofkes, Ken Hurt, Tom Bembnister, Bill Loiselle, Rollie Keyeski, Al DeRusha, Tim Joas, Jamie Barney, Pat Brown, Steve Wermund, Chuck Thornton, Mark Sevens, Jim Farety, Randy Schulner Mike Peterson, Tony Kleinvachter, Bill Wenzel, Tom Zutter, Kay Endres Hanson, Dan Hunt, Kathy Borman Nyhus, Dawn Nauman Garside, Jodie Tichey Balow, Cindee Connell Appel, Carol Yohnk, Laurie McCombs Schulner, Janet Boos, Kathy Crawford Jasper, and Roxie Bohl Murphy.



View slideshow of all photos from the reunion on the McDonnell Area Catholic Schools Alumni - Class Reunion page on the website.

## Keep in touch with your Alumni Association

Update contact information on the Alumni page of the McDonnell Area Catholic Schools website. Read news on upcoming events, send us your photos and reunion information to [MackMessenger@macs.k12.wi.us](mailto:MackMessenger@macs.k12.wi.us)







## McDonell Memorial Class of 1955

Left to Right seated: Jacquie Schmidt Stumpf, Jeanne Schmidt Hancock, Rita Pitsch Horne, Paula Monarski Westberg, Evie Stoehr Arntz, Toni Simon Ludwikoski, Judy Sinette Sires, Sr. Yvonne Hiess SSND. Row 2: Rodney Shafer, Grace Mrozinski, Jim Stopfer, Lois Loiselle Kloss, Lois Bresina Paquette, Charlotte Geissler Goettl, Catherine Cooney Carroll, Delores Geissler Follensbee, Dick Deniger. Row 3: Jon Rubenzer, George Flint, Bernard Rieman, Larry Muldoon, Tom Rooney, Louie Gettler.



The class of 1955 had a pizza party Friday, October 2, 2015 at the Fill Inn Restaurant (group picture above). On Saturday the next day the class attended 4:30 Mass at the Church of Notre Dame then dinner at the Heyde Center for the Arts where they watched the performance of *Rings of Kerry* in their former school auditorium. Everyone had a great time.

Bernard "Fuzz" Rieman and the committee collected money for a

16x16 pavestone to be placed at Irvine Park this summer. The stone is in remembrance and appreciation of the great education they received from McDonell High School.



## MACK BITS

### Chippewa Valley Honors Jazz Festival

The McDonell Jazz Ensemble is registered to perform at the Eau Claire Jazz Festival on Saturday, April 23rd. Wish us well as we prepare for this competitive festival!

### Math Team Competition

Congratulations to the two McDonell Math Teams for their performance on February 20th at the University of Wisconsin-Eau Claire. The team consisting of Jacob Lindsley, Sam Huffcutt, Sam Zwickel, Olivia Parkhurst, Peter Stoffel, and Tim Buchmann took first place in Class A. Sam Zwickel and Peter Stoffel earned 6th place medals, Sam Huffcutt was a third place medalist, and Tim Buchmann was the overall winner in Class A. *Congratulations to our Mathematicians!*

## ALL ALUMNI EVENT

### Hall of Fame Induction and Gathering

Saturday, April 30, 2016 • 5:00 PM

Held at Bye the Willow in Chippewa Falls

View Inductees and register on the alumni page of our website: [www.macs.k12.wi.us](http://www.macs.k12.wi.us)

We would like to gather stories about your time at either McDonell Central or McDonell Memorial and what you are doing now! Please send and share your stories to:

MACS Legacy Story

Atten: Cathy Greenseth

1316 Bel Air Blvd. Chippewa Falls, WI 54729

Email: [MackMessenger@macs.k12.wi.us](mailto:MackMessenger@macs.k12.wi.us)



McDonnell Central Catholic High School presented "Grease - School Edition" their 35th consecutive musical production in January 2016.

**Director of the Show:** Sue Decker      **Stage:** Carol Way

**Choral:** Amy Vogt      **Orchestra:** Sean Hanson

**Technology:** Skip August      **Costumes:** Rose August

The cast featured students, alumni and community members. Students from McDonnell High School, Notre Dame Middle School, and St. Peter School were all involved in fantastic sold out performances.

Many students and a special crew of "dads" were busy building and painting the sets. *Everyone thoroughly enjoyed their time working on the musical.*

Cast Members:

**Danny:** Frank Rineck

**Sandy:** Olivia Burmeister

**Kenicke:** Scott Wild

**Rizzo:** Taya Kremer

**Roger:** Sam Zwickel

**Jan:** Maggie Meinen

**Doody:** Gordy Schafer

**Frenchy:** Kennedy Eslinger

**Sonny:** Jalen Tozer

**Marty:** Tatiana Broses

**Eugene:** Mark Buchmann

**Patty:** Madeleine Wild

**Vince Fontaine:** Chase Everson

**Teen Angel:** Anthony Roach

**Cha-Cha:** Chloe McChesney

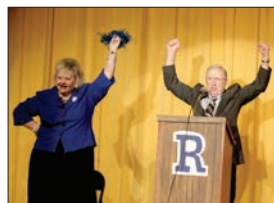
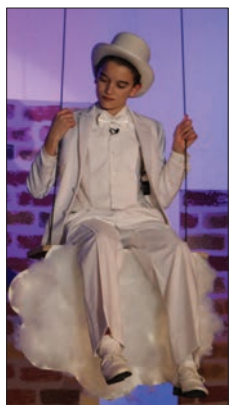
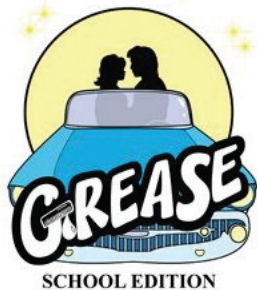
Adult Cast:

**Miss. Lynch:** Mrs. Carolyn Weibel

**Old Eugene:** Dr. Gene Decker

**Old Patty:** Mrs. Mary Chovan '69 King

**Johnny Casino:** Fr. Charlie Richmond







## Join us at these upcoming events

- Alumni Gathering and Hall of Fame Induction Ceremony April 30, 2016 (pg 12)
- Baccalaureate May 25, 2016 at St. Charles Borromeo Church at 7:30 PM
- Graduation Wednesday, June 1, 2016 at 7:30 PM in the school gymnasium  
*Streaming live on our website!*

**PARENTS:** IF THIS ISSUE IS ADDRESSED TO YOUR SON OR DAUGHTER WHO NO LONGER LIVES AT HOME, PLEASE CALL THE ALUMNI OFFICE WITH CORRECT ADDRESS: 715.723.0538 OR GO ONLINE: [www.macs.k12.wi.us/alumni.html](http://www.macs.k12.wi.us/alumni.html)



## WIAA Division 5 Boys Basketball State Champions McDonnell Central Macks

**Standing Left to Right:** Assistant Coaches Mitch Jacobson '07, Ben Ruf '15, Dan Schley '07, Isaac Bohaty, Charlie Bleskachek, Hayden Baughman, Alex Ohde, Grayson Knowlton, Nate Hogleund, Austin Amelse, Ryan Sorensen, Assistant coach Andrew Ruf '07, Head Coach Archie Sherbinow. **Kneeling:** Cory Hogleund, Joey Huffcutt, Ben Retzlaff, Henry Erickson, Evan Smith, Jake Wiensch, Wes Benish, Jordan Molton. More information in the upcoming Summer/Fall 2016 issue.